



## Biodiversity Action Planning in the Goulburn Broken Catchment

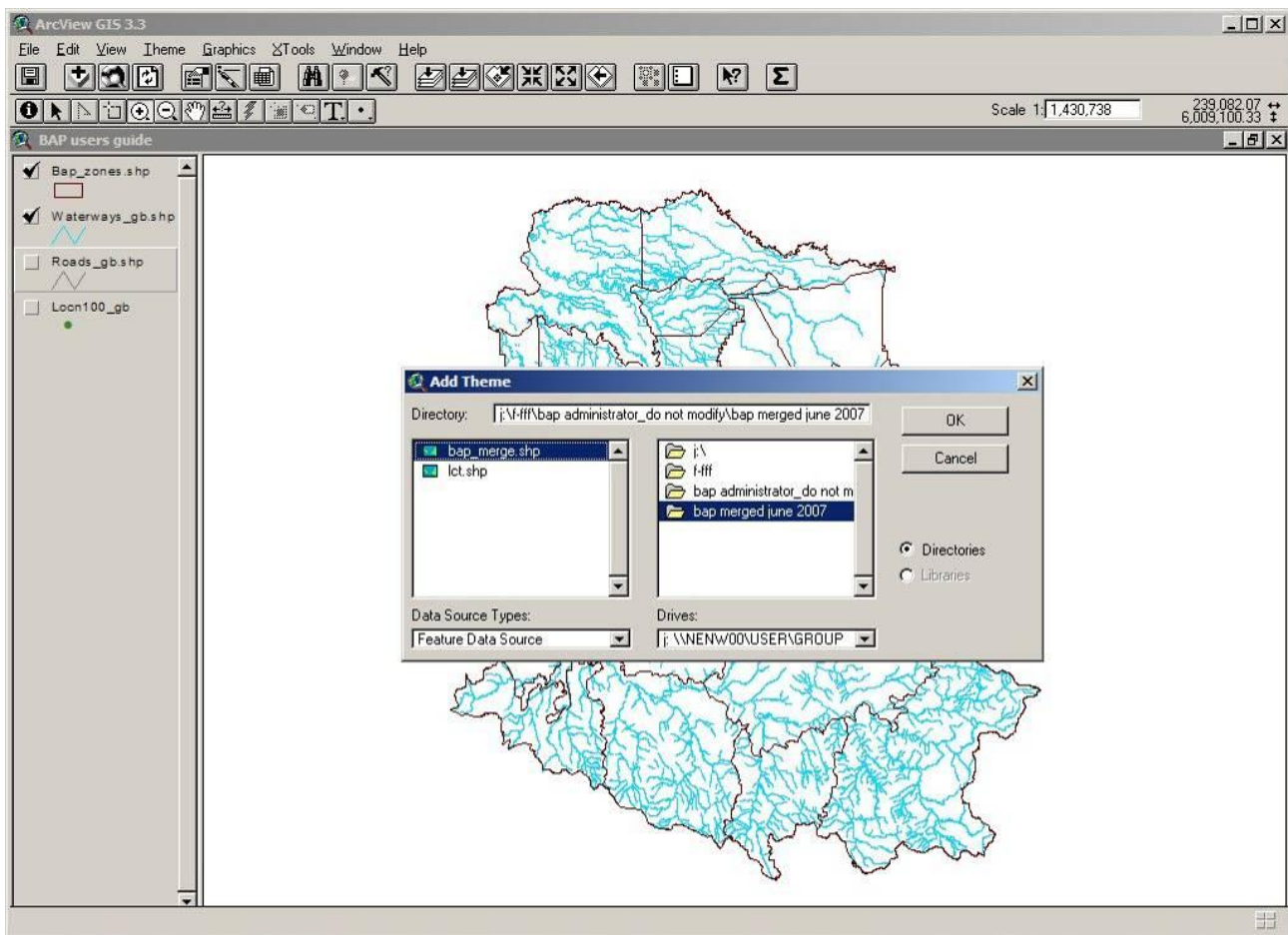
### BAP users guide to ArcView

This guide details how to:

- Access shapefiles provided on CD.
- Display BAP sites showing priority ratings.
- Access attribute table
- View all very high priority BAP sites in the Dookie zone that contain the biodiversity asset wetland.
- View selection in project map

#### How to access shapefiles provided on CD.

1. Copy and paste all files (dbf/shp/shx) from CD into an appropriate storage area (for example on your C drive or network drive).
2. Open your Arcview project and click **Add Theme** button (➕ button with black cross)
3. Navigate to where shapefiles are stored (Fig. 1)

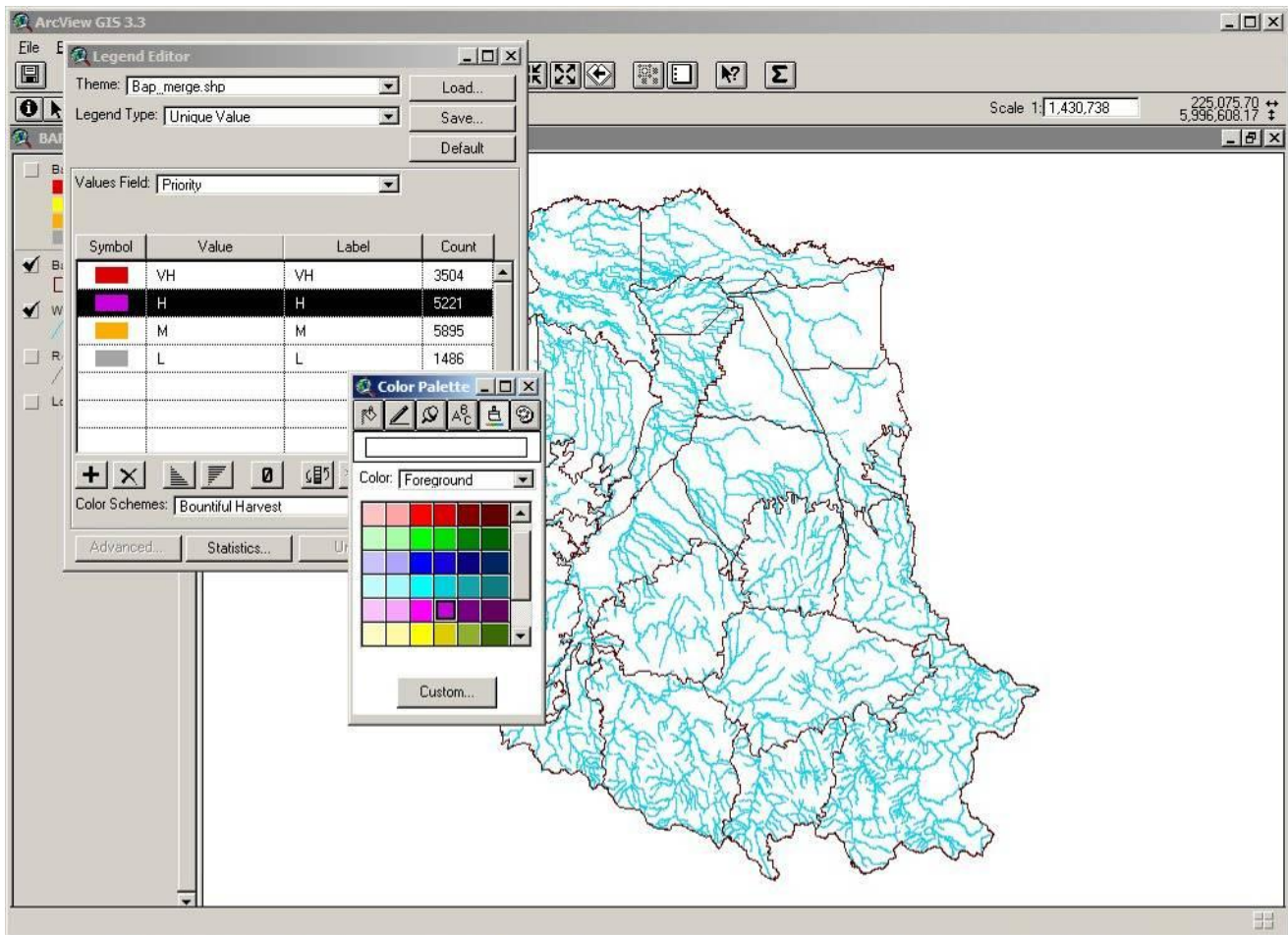




## Biodiversity Action Planning in the Goulburn Broken Catchment

### How to colour code BAP sites to show priority ratings.

1. Double click on theme in left column of view to open up **Legend Editor**
2. Select 'Unique Value' in **Legend Type**.
3. Select 'Priority' in **Values Field**
4. Double click in **Symbol** column and use paint brush symbol to change colours or select from **Colour Schemes** (fig 2)
5. To change **Label**, type in new name.
6. To change order of **Value** click in **Symbol** column and drag.



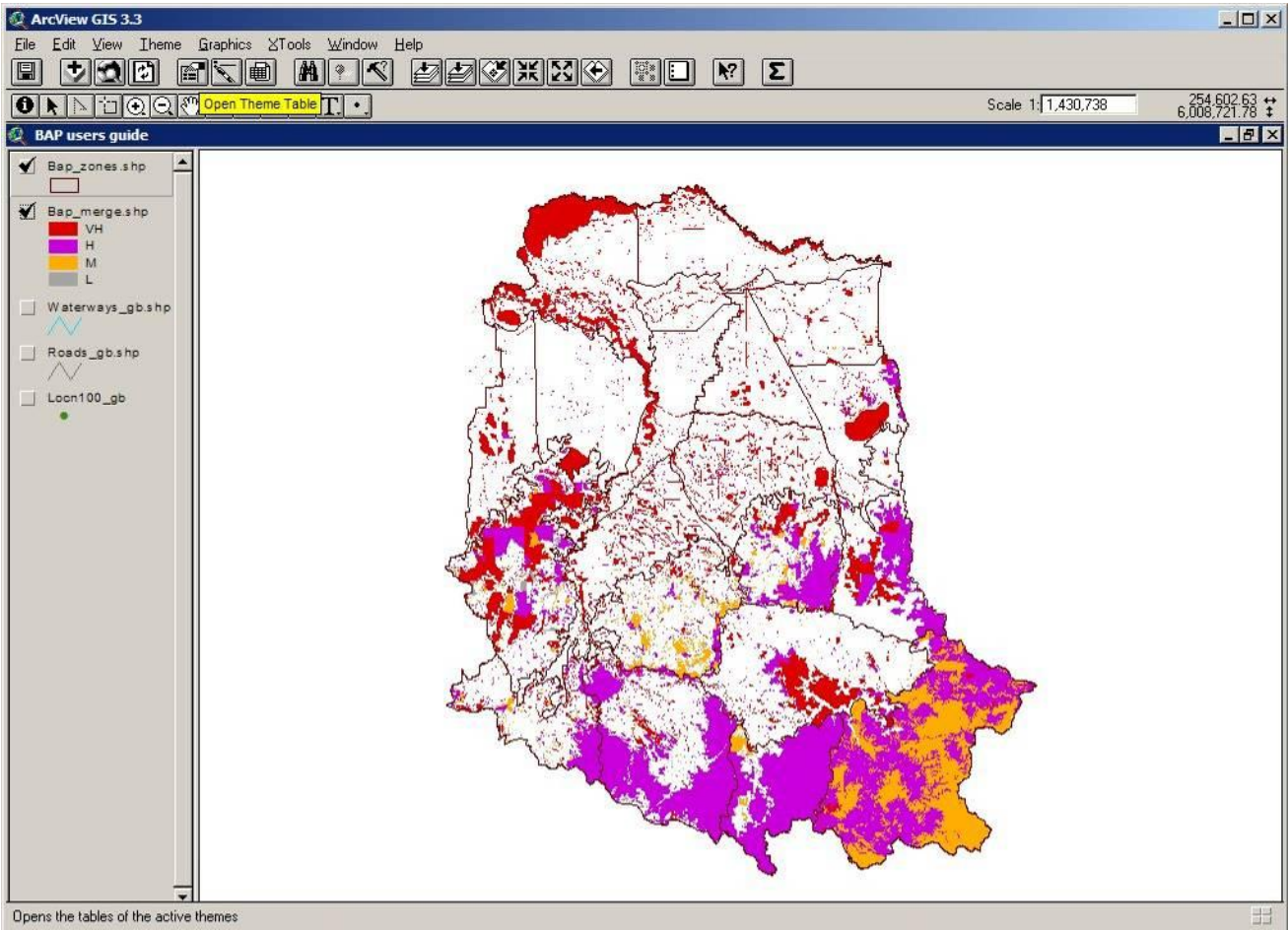




# Biodiversity Action Planning in the Goulburn Broken Catchment

## How to access attribute table

1. Click on **Open Theme Table** .






## Biodiversity Action Planning in the Goulburn Broken Catchment

### How to query attribute table

e.g. To view all very high priority BAP sites in the Dookie zone that contain the biodiversity asset wetland.

1. Click on **Query Builder** ( hammer button)
2. Click in **Update Values** box in new screen
3. Double click [Bap\_zone] in **Fields** column
4. Click = button
5. Double click "Dookie" in **Values** column
6. Click **and** button
7. Double click [Priority] in **Fields** column
8. Click = button
9. Double click "VH" in **Values** column
10. Click **and** button
11. Double click [Bio\_asset1] in **Fields** column
12. Click = button
13. Double click "Wetland" in **Values** column
14. Close brackets
15. Click **New Set** (fig 4)

Selection will be highlighted in yellow

The screenshot shows the ArcView GIS 3.3 interface. The main window displays the 'Attributes of Bap\_merge.shp' table. The table has columns: Shape, Bap\_zone, Site\_no, Site\_name, Priority, Hectares, Bioregion, Evc, and Evc\_con\_st. The 'Query Builder' dialog box is open, showing the following query:   
 Fields: [Site\_name], [Priority], [Hectares], [Bioregion], [Evc], [Evc\_con\_st], [Bio\_asset1]   
 Values: "Waterway", "Waterways", "Wetland", "Wetlands", ""   
 Operators: =, <=>, and, >=, or, <=<, not, ()   
 Query: ([Bap\_zone] = 'Dookie') and ([Priority] = 'VH') and ([Bio\_asset1] = 'Wetland')   
 The 'Update Values' checkbox is checked. The 'New Set' button is visible. The table data is visible in the background, with several rows highlighted in yellow.


Shape	Bap_zone	Site_no	Site_name	Priority	Hectares	Bioregion	Evc	Evc_con_st
Polygon	Dookie	802524-8	173A 12	VH	10.51	VR	55	E
Polygon	Dookie	802524-9	115	VH	74.36	NIS	175	E
Polygon	Dookie	802524-10	119A 119B	H	6.16	NIS	175	E
Polygon	Dookie				34.23	NIS	175	E
Polygon	Dookie				5.72	NIS	175	E
Polygon	Dookie				16.50	VR	55	E
Polygon	Dookie				48.59	NIS	175	E
Polygon	Dookie				11.63	NIS	175	E
Polygon	Dookie				34.69	NIS	175	E
Polygon	Dookie				4.04	NIS	175	E
Polygon	Dookie				37.57	VR	292	E
Polygon	Dookie				17.01	VR	867	E
Polygon	Dookie				10.07	VR	867	E
Polygon	Dookie				17.33	VR	867	E
Polygon	Dookie				7.79	VR	867	E
Polygon	Dookie				298.19	NIS	61	V
Polygon	Dookie				248.96	NIS	175 22	E
Polygon	Dookie				89.03	NIS	175	E
Polygon	Dookie				36.05	NIS	175	E
Polygon	Dookie	802524-1	108	VH	36.21	VR	333	E
Polygon	Dookie	802523-4	115B 89	VH	83.01	VR	297	E
Polygon	Dookie	802523-2	108	VH	20.80	VR	333	E
Polygon	Dookie	802523-3	27 25B 26B	VH	71.21	NIS	175	E
Polygon	Dookie	802524-23	105B 105A	H	6.96	VR	292	E
Polygon	Dookie	802522-1	73A	VH	2.60	VR	867 68	E
Polygon	Dookie	802522-2	73A 73B	H	2.82	VR	68	V
Polygon	Dookie	802522-3	Various	H	9.05	VR	68	V
Polygon	Dookie	802522-4	Various	VH	11.12	VR	68	V
Polygon	Dookie	802522-5	Various	H	6.26	VR	68	E
Polygon	Dookie	802522-6	64F J Crown	VH	8.81	VR	235	E
Polygon	Dookie	802522-7	Various	VH	20.34	VR	68 55	V
Polygon	Dookie	802522-8	LP13795	VH	10.73	VR	68	V
Polygon	Dookie	802522-9		H	8.98	VR	68	V
Polygon	Dookie	802522-10	29 31 32	H	6.85	VR	68	V
Polygon	Dookie	802522-11	Various	VH	43.86	VR	55 56	E
Polygon	Dookie	802522-12	74R 74A	H	4.73	VR	867	F





## Biodiversity Action Planning in the Goulburn Broken Catchment

### How to view selection in project map

1. Close attribute table
2. Click “zoom to selected” 
3. Selection will be highlighted in **view** (fig 5)

